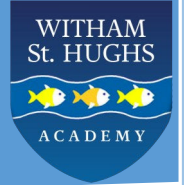




Witham St Hughs Academy  
A L.E.A.D. Academy

# Witham News

*Edition Six*  
15th March 2024



## Headteacher Comments

Welcome to our March newsletter and I hope that you have had a great half term so far. Time is certainly marching on as we head towards Easter!

What a term it has been so far! We have had Maths in Action where we saw great commitment and engagement from our parents, and all parents have had the opportunity to share their love of reading by visiting our library to hear their child read. Every event has been so well supported so thank you to our brilliant community!

On the sporting front, the list of opportunities grows each term. The cross country league has started and we have had a group of Y5 and Y6 children taking part in various meetings already with real success. Our group of exceptional Y6 swimmers have also taken part in the Westgate Swimming Gala and we have had various football matches and events for our football teams. 'The Witham Way' has actively been promoted through all of our sport events and I would like to say a huge well done to everyone who has taken part—you are all amazing.

As part of our curriculum offer, the children have also had some school trips: Y3 have been to Cresswell Craggs, Y5 The Space Centre and Y1 have visited Lincoln Castle. Everyone impressed as always.

A real highlight this term must be The Masked Reader. The noise was deafening in the hall whilst the big reveal was taking place but great fun! Thank you to the staff who took part – this really does show an absolute passion for reading and we all know important this is.

As always, if you do have any questions then please come and speak to your class teacher or alternatively contact the school office.

Kind regards,

Richard Stock

*Headteacher, Witham St Hughs Academy*



## Office Opening Hours

**Monday — Thursday**

8.15am—4.15pm

**Friday**

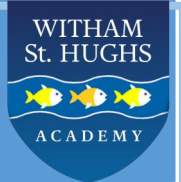
8.15am—4.00pm

## Facebook

As always, please remember to follow all of our rich and varied curriculum activities and find out what your children have been doing on our Facebook page.

We work hard to show all of our ambitions so again, thank you for supporting us with this!





## Maths in Action

Math in Action



Thank you so much to everyone who attended and came into our Academy to see some Maths in Action!

As always, it was super to see so many parents come along and engage with us and I hope it was useful. The children were so pleased to be able to share their learning with you all.

We will continue to think of new ways for you to engage with us and allow you all to visit school and experience life in the classroom!

Thank you for your continued support.

## Staffing News



Since half term, we have made some new staffing appointments and we are excited to be able to welcome some new members to our team who will start after Easter.

Mr Tom Sheridan will be joining the Y3 team and replaces Mrs Lill as Y3 class teacher. He is thrilled to be joining us and he will start to get to know the children from next week when he is attending school for a few days. He will also be attending Parents' Evening.

We are also having a re-organisation of our teaching assistant team after Easter. Mrs Emily Milner is moving up to Y4 as their new teaching assistant which means that Mrs Tyrell will be joining Y5 and Miss Burr is joining Y6.

We are also delighted that Mrs Hanna Kirk is joining the Y2 team. She will be working as a 1:1 and again I know she is so excited to be joining our team.

As always, if you do have any questions about any of our staffing news then please do let us know.

Thank you!

## Parents Evening

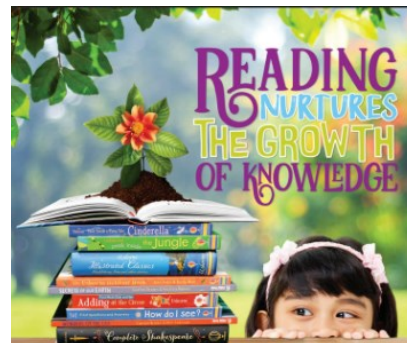
Next week, we have our Spring term parents evenings on Tuesday 19th March and Thursday 21st March between 4.00pm and 7.00pm for our FS—Y5 pupils.

Our team are looking forward to sharing how well your children are getting on and I hope that you enjoy looking through their amazing range of work.

Appointments last **ten minutes only** but if you do need more time to discuss anything specific then alternative times can be arranged for you.

It is important that everyone sticks to their appropriate time to allow the evening to run smoothly.

Usborne books will also be attending on both nights and will be based in the library. If you fancy spoiling your children with a few books then please come along and take a look. They always have a fantastic range of high quality texts.



Look forward to seeing you all next week!

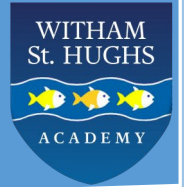
## Reading News

A huge well done to four of our amazing Y6 children who took part in the National Reading Champions Quiz this week.

They put their knowledge of authors, book titles and characters to the test!

We are delighted to say that they **achieved first place** out of the primary schools who took part which is a brilliant achievement. Well done!





## Parking outside school

We appreciate that parking outside school on drop off and pick is not always easy. We will be reminding our children about our expectations outside school during these times as we also need to ensure that they cross roads safely and show safe behaviour.

Please can you help us with this by parking in the correct designated spaces and dropping off at the appropriate places.

Thank you!



The PTFA would like to thank everyone for their brilliant support this academic year.

The PTFA are excited to be holding their Easter disco on Monday 25th March in the school hall.

**EYFS/KS1 is between 5.15pm—6.15pm**

**KS2 is between 6.30pm—7.30pm**

This is a ticket only event and is only bookable on our PTA events site. Please see our posters and [www.pta-events.co.uk/withamsthughspfta](http://www.pta-events.co.uk/withamsthughspfta) for full details. Please note that tickets are limited for this event and that the closing date for booking tickets is Thursday 21st March 2024.

The PTFA have more events and competitions planned for after Easter, so look out for further details shortly!

Thank you!

## School Values



Just a reminder of our school values. These form the heart of our school ethos and we promote them each day. Our KS1 children bring home stickers home if they show our values and our KS2 children earn citizenship points for showing them.

## School visit volunteers

Thank you so much to all of our parents who have supported on our school visits this academic year. You play such an important role in helping ensure that our visits can take place and we are extremely grateful for your help.

As a volunteer, we do acknowledge that you give up your time. However, we also wanted to remind you that we cannot always guarantee that you will be with your child's class due to how trips are organised as we also need to make sure that adult-pupil ratios are correct.

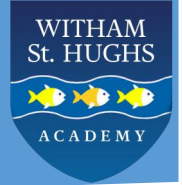
## School site reminders

Please be reminded that children and adults should not be on their bikes and scooters once they come onto the school premises.

With so many adults and children coming onto the school site, we need to ensure that everyone remains safe and doesn't get knocked into.

Please can we also ensure that everyone looks where they are going when entering the school because it can become extremely congested and again we need to make sure that everyone remains safe.

Thank you!



## **Diary dates**

### **March 2024**

<i>Monday 4th March</i>	<i>Parent library session visits—various times</i>
<i>Tuesday 5th March</i>	<i>Y5 Space Centre visit</i>
<i>Wednesday 6th March</i>	<i>Hobgoblin Theatre Company</i>
<i>Thursday 7th March</i>	<i>World Book Day</i>
<i>Friday 8th March</i>	<i>Y3 Cresswell Craggs visit</i>
<i>Monday 11th March</i>	<i>British Science Week</i>
<i>Wednesday 13th March</i>	<i>Y1 Lincoln Castle visit</i>
<i>Tuesday 19th March and Thursday 21st March</i>	<i>EYFS — Y5 Parents Evening between 4.00pm and 7.00pm</i>
<i>Friday 22nd March</i>	<i>Community Council Quiz Evening</i>
<i>Thursday 28th March</i>	<i>Term four ends at 2.00pm</i>

### **April 2024**

<i>Monday 15th April</i>	<i>Staff training—school closed</i>
<i>Tuesday 16th April</i>	<i>Term five starts</i>

### **May 2024**

<i>Monday 13th May</i>	<i>Y6 SATS week begins</i>
<i>Friday 24th May</i>	<i>Term five ends</i>



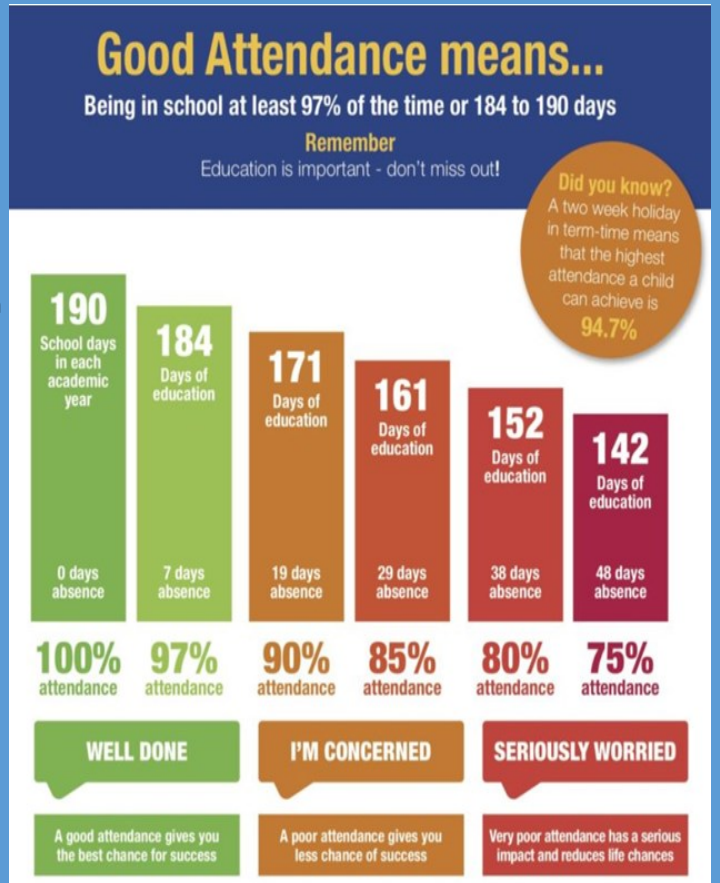
Welcome to the Witham Well-Being update. As you are aware attendance is so important for all children and improving their social and emotional well-being alongside their academic achievements.

Here are a few ideas to support your child with their attendance and positively promote coming to school every day;

- \* Talk about what they enjoy learning at school
- \* Remind them who they can talk to at school
- \* Prepare things the night before - uniform, book bag
- \* Have a regular bedtime for a good night's sleep
- \* Start each day in a positive way

You can also check the NHS website below for common childhood illness to seek advice for attendance.

<https://www.nhs.uk/live-well/is-my-child-too-ill-for-school/>



### Pastoral Support

Ms Ford continues to support those children who may need additional support. She has dedicated time during the school day to talk to children about their feelings. These sessions take place in the nurture room on an individual or small group basis. There are a range of groups which Ms Ford regularly leads including :

- \* Young Carers \* Bereavement \* Separated families \* Emotions and Feelings

Please do let us know if you would like more information about these groups.

### Who to contact?

Remember that we are always here to support you and Michelle Dexter our distinct groups leader contacts many parents regularly to make sure everything is going well. Her email address is- [michelle.dexter@withamsthughesacademy.co.uk](mailto:michelle.dexter@withamsthughesacademy.co.uk). If you think that you need further support then do not hesitate to contact school on: 01522 869590 or [enquiries@withamsthughesacademy.co.uk](mailto:enquiries@withamsthughesacademy.co.uk)

### Useful Numbers

Child Line: 0800 1111

Young Carers Helpline: 01522 553 275

Samaritans: 01522 528 282

Family Services: 0800 195 1635

Women's Aid: 0808 2000 247

### Attendance

Part of Mrs Dexter's role is continuing to monitor attendance at the academy. She will regularly contact families where children's attendance has dropped below 90% with a welfare check and to offer support if required.