



L.E.A.D. Academy Trust

Lead • Empower • Achieve • Drive

L.E.A.D. ACADEMY TRUST BEHAVIOUR POLICY

Policy Information

Document name	Behaviour Policy
Date approved	February 2024
Date issued	January 2024
Date of review	January 2025
Document name	Behaviour Policy

Introduction

This policy sets out the legal framework, the definitions and our policy expectations.

The L.E.A.D. Academy Trust requires this policy to be implemented by all its member academies.

The policy makes the expectations for behaviour management explicit to ensure consistency of practice across the network of academies. The L.E.A.D. Academy Trust defines the policy expectation, but the responsibility for implementation of the policy rests with the Headteacher of each academy.

Underpinning our policy are the following principles:



Cross Reference: Suspensions and Exclusions Policy

Legislative Framework

- [Behaviour in schools: advice for headteachers and school staff 2022](#)
- [Searching, screening and confiscation: advice for schools 2022](#)
- [The Equality Act 2010](#)
- [Keeping Children Safe in Education 2023](#)

- Suspension and permanent exclusion from maintained schools, academies and pupil referral units in England, including pupil movement
- Use of reasonable force in schools
- Supporting pupils with medical conditions at school
- Special Educational Needs and Disability (SEND) Code of Practice.
- Schedule 1 of the Education (Independent School Standards) Regulations 2014; paragraph 7 outlines a school's duty to safeguard and promote the welfare of children, paragraph 9 requires the school to have a written behaviour policy and paragraph 10 requires the school to have an anti-bullying strategy
- DfE guidance explaining that academies should publish their behaviour policy and anti-bullying strategy

Procedures for behaviour management implemented by individual academies will be operated in a positive way, reflecting the Trust's underpinning principles and high expectations of all within the academy community.

All staff are responsible for promoting and establishing positive behaviour across Trust academies. It is important that all staff are consistent and proactive in rewarding good behaviour, and in dealing with unacceptable behaviour.

Academy Expectations

The Trust expects each academy to:

- Have a whole-school behaviour policy which details its approach to behaviour management. The academy behaviour policy should include detail on the following:
 - Purpose – including the underlying objectives of the policy, and how it creates a safe environment in which all pupils can learn and reach their full potential;
 - Leadership and management – including the role of designated staff and leaders, any systems used, the resources allocated and engagement of governors;
 - Academy systems and social norms – including rules, routines, and consequence systems;
 - Staff induction, development and support – including regular training for staff on behaviour;
 - Pupil transition – including induction and re-induction into behaviour systems, rules, and routines;
 - Pupil support – including the roles and responsibilities of designated staff and the support provided to pupils with SEND where those needs might affect behaviour;
 - Child-on-child abuse – including measures to prevent child-on-child abuse and the response to incidents of such abuse; and
 - Banned items – a list of items which are banned by the academy and for which a search can be made
- Include staff in reviewing and contributing towards behaviour policy formation
- Involve pupils in the creation and review of academy codes of conduct
- Provide a purposeful learning environment conducive to promoting high standards of pupil conduct and positive attitudes to learning
- Involve parents/carers by communicating well to seek their support
- Make positive recognitions of pupil achievement
- Ensure that if things go wrong, pupils are given the opportunity to put things right.

The Trust expects each Academy Governing Body (AGB) to provide clear guidance to its academy relating to:

- Screening and searching pupils (including identifying in the school items which are banned and which may be searched for);
- The power to use reasonable force or make other physical contact;
- The power to discipline beyond the school gate;

- Pastoral care for school staff accused of misconduct; and
- When a multi-agency assessment should be considered for pupils who display continuous disruptive behaviour.

Each academy, in order to instil good behaviour, should therefore:

- Provide an environment conducive to effective learning for all pupils and staff
- Raise and promote self-esteem in all members of the academy community
- Promote consideration and respect for others and the academy environment
- Encourage a shared responsibility between home and the academy
- Define what constitutes acceptable and unacceptable behaviour
- Provide guidance for staff, pupils and parents, enabling everyone to know what is expected of them.

Positive recognition motivates pupils to observe the rules. Whilst consistently dealing with disruptive behaviour, teachers are expected to focus positively on pupils who are behaving well, ensuring that praise is well utilised in classrooms and around the academy site. If this strategy is used consistently, it will have the following effects:

- Encourage all pupils to behave appropriately
- Increase pupil self-esteem, self-confidence and reflectiveness
- Dramatically reduce behaviour problems and confrontational situations
- Create a positive classroom environment for both pupil and class teacher
- Help to teach behaviour and establish positive relationships.

Consequences

In addition to positive recognition, there must be systems for dealing with disruptive behaviour when pupils choose not to follow the rules. Systems should have staged interventions with a clear scale of escalation to cope with repetition. It is important that this staged intervention is designed to allow all pupils the opportunity to choose to change his/her behaviour within an identified framework.

The Trust expects each academy to record both positive recognition and consequences.

When a pupil is experiencing difficulties with behaviour and normal classroom sanctions have not worked, the Trust expects the Headteacher to initiate a clear plan of support. Examples may include:

- Behaviour plans
- Risk Assessment
- Pastoral Support Programmes (PSPs) if pupils are at risk of suspension or exclusion
- Use of alternative provision (AP)
- A referral to local partners and external agencies may also be considered if it is felt that there are other issues affecting the pupil's behaviour that could be better addressed through a multi-agency approach. Where a school has serious concerns about a pupil's behaviour, it should consider whether a multi-agency assessment such as an early help assessment or statutory assessment that goes beyond the pupil's educational needs is required. See [Working Together](#)

Outside agencies may include:

- School nurse
- Educational psychologist
- Police
- Family doctor
- CAMHS

- Behaviour support team
- Speech therapist
- Visual impairment services
- Families Information Service/ ASK US (formally parent partnership)
- Attendance Support Team (formally EWO)

Suspension and Exclusion

Ultimately, a pupil who does not behave in accordance with the standards set may be suspended for a fixed term, or may be permanently excluded from the academy. Situations where suspension or exclusion may be considered include violent assault on another pupil or an adult, inappropriate sexual behaviour, verbal abuse/threatening behaviour against a pupil or an adult, bullying, racial abuse, drug or alcohol related offences or persistent disruptive behaviour. (See Suspension and Permanent Exclusion Policy).

Equality Statement

The L.E.A.D. Academy Trust is committed to applying the equality duty in all academies across all phases. It is the responsibility of all staff, leaders, trustees and governors to have due regard to the need to eliminate unlawful discrimination, to advance equality of opportunity, and to foster good relations between people.

Safeguarding

L.E.A.D. Academy Trust recognises that changes in behaviour may be an indicator that a pupil is in need of help or protection. As a result, we expect each academy to consider whether a pupil's misbehaviour may be linked to them suffering, or being likely to suffer, significant harm.

Where this may be the case, the academy is expected to follow our child protection and safeguarding policy, and consider whether pastoral support, an early help intervention or a referral to children's social care is appropriate.

Bullying

L.E.A.D Academy Trust is committed to promoting an anti-bullying/harassment ethos, where bullying and harassment are not tolerated. The Trust takes issues of bullying/harassment seriously and enables all members of the Trust's community to challenge bullying behaviour in order that a supportive, cooperative ethos is maintained. Bullying, especially if left unaddressed, can have a devastating effect on individuals.

Monitoring, Evaluation and Review

In order to determine the effectiveness of a policy, the Trust will monitor and evaluate its impact. This will be achieved by:

- Analysis of data
- The AGB, via the SEND Link Governor, annually reviewing progress made and the effectiveness of the policy in their academy
- Trust Board scrutiny of suspension and exclusion data
- Quality Assurance (QA) visits made by Directors of Schools.



L.E.A.D. Academy Trust
Lead • Empower • Achieve • Drive



Witham St Hughs Academy

Behaviour Policy

Review frequency: Annual

Policy/Procedure management log

Document name	Behaviour Policy
Date approved	February 2024
Date issued	January 2024
Date of review	January 2025
Approved by	Academy Governing Body (Governor - Tom Miller) As a statutory policy this needs to be reviewed annually and minuted at the AGB meeting.

Aims

At Witham St Hughs academy, it is our aim to:

- Establish a whole-school approach to maintaining high standards of behaviour that reflect the values of the academy
- Create a positive culture that promotes excellent behaviour, ensuring that all pupils have the opportunity to learn in a calm, safe and supportive environment
- Outline the expectations and consequences of behaviour
- Provide a consistent approach to behaviour management for pupils
- Define what we consider to be unacceptable behaviour, including bullying and discrimination

At Witham St Hughs academy, our underlying principles are:



Legislation, statutory requirements and statutory guidance

This policy is based on legislation and advice from the Department for Education (DfE) on:

- [Behaviour in schools: advice for headteachers and school staff 2022](#)
- [Searching, screening and confiscation: advice for schools 2022](#)
- [The Equality Act 2010](#)
- [Keeping Children Safe in Education 23](#)
- [Suspension and permanent exclusion - 2023](#)

- Use of reasonable force in schools
- Supporting pupils with medical conditions at school
- Special Educational Needs and Disability (SEND) Code of Practice.
- Schedule 1 of the Education (Independent School Standards) Regulations 2014; paragraph 7 outlines a school's duty to safeguard and promote the welfare of children, paragraph 9 requires the school to have a written behaviour policy and paragraph 10 requires the school to have an anti-bullying strategy
- DfE guidance explaining that academies should publish their behaviour policy and anti-bullying strategy

This policy complies with our funding agreement and articles of association.

Definitions

At Witham St Hughs academy, misbehaviour is defined as:

- Disruption in lessons, in corridors, and at break and lunchtimes
- Non-completion of classwork or homework
- Poor attitude
- Incorrect uniform
- Breach of the academy rules

When misbehaviour occurs, it should be dealt with consistently using the sanctions that schools have in place, and restorative work should be undertaken to ensure that misbehaviour does not escalate.

At Witham St Hughs academy serious misbehaviour is defined as:

- Repeated breaches of the academy rules
- Any form of bullying
- Sexual harassment, meaning unwanted conduct of a sexual nature, such as:
 - Sexual comments
 - Sexual jokes or taunting
 - Physical behaviour like interfering with clothes
 - Online sexual harassment, such as unwanted sexual comments and messages (including on social media), sharing of nude or semi-nude images and/or videos, or sharing of unwanted explicit content
- Child on Child abuse
- Theft
- Vandalism
- Fighting
- Smoking and Vaping
- Racist, sexist, homophobic or other discriminatory behaviour

Possession of any prohibited items. These are:

- Knives or weapons
- Alcohol
- Illegal drugs
- Stolen items
- Cigarettes, tobacco and/or cigarette papers
- Vapes and/or related items
- Fireworks
- Pornographic images

- Any article a staff member reasonably suspects has been, or is likely to be, used to commit an offence, or to cause personal injury to, or damage to the property of, any person (including the pupil)

If serious misbehaviour occurs, the academy will investigate the incident fully, and will treat each case individually using a balanced and proportionate approach.

At Witham St Hughs academy bullying is defined as:

The repetitive, intentional harming either physically or emotionally, of a person or group.

Bullying is, therefore:

- Deliberately hurtful
- Repeated, often over a period of time
- Difficult to defend against

Bullying can include:

TYPE OF BULLYING	DEFINITION
Emotional	Being unfriendly, excluding, tormenting
Physical	Hitting, kicking, pushing, taking another's belongings, any use of violence
Prejudice-based and discriminatory, including: <ul style="list-style-type: none"> • Racial • Faith-based • Sexist • Homophobic/biphobic • Transphobic • Disability-based 	Taunts, gestures, graffiti or physical abuse focused on a particular characteristic (e.g. gender, race, sexuality)
Sexual	Explicit sexual remarks, display of sexual material, sexual gestures, unwanted physical attention, comments about sexual reputation or performance, or inappropriate touching
Direct or indirect verbal	Name-calling, sarcasm, spreading rumours, teasing
Cyber-bullying	Bullying that takes place online, such as through social networking sites, messaging apps or gaming sites, this includes harmful online challenges and hoaxes.

Our vision:

Education for Lifelong Learning

Aims and objectives of the behaviour policy:

The aims and objectives of our behaviour policy reflect and support the Academy's mission statement and aim and make reference to the importance of using our shared values to promote positivity.

1. Encourage a nurturing, purposeful and happy learning environment within our academy.
2. Promote and model positive, caring attitudes towards everyone, where achievements are celebrated and valued.
3. Provide opportunities for children to develop their independence, self-discipline and sense of responsibility towards themselves and others.
4. Develop a consistent approach towards developing positive behaviour.
5. Ensure that expectations of behaviour are clearly communicated to children.
6. Establish a coherent and fair reward system that acknowledges and celebrates good behaviour for all.
7. Establish procedures which determine a clear and consistent approach to unacceptable and disruptive behaviour.
8. Raise self-esteem and model and promote positive behaviour throughout the academy and the curriculum.
9. Ensure that the development and progression of pupils with behavioural needs are regularly reviewed with involvement of staff, parents/carers.
10. Effectively manage incidents of bullying, sexism, sexuality or racism, including the protected characteristic groups, if and when they occur and log these in a well-timed manner.

Roles and responsibilities

The AGB

The AGB is responsible for:

- Reviewing this behaviour policy in conjunction with the AGB and staff
- Monitoring the policy's effectiveness
- Holding the Headteacher to account for its implementation

The Headteacher

The Headteacher is responsible for:

- Reviewing this policy in conjunction with the AGB and staff.
- Giving due consideration to the academies statement of behaviour principles (appendix 1)
- Reviewing and approving this behaviour policy
- Ensuring that the academy environment encourages positive behaviour
- Ensuring that staff deal effectively with poor behaviour
- Monitoring how staff implement this policy to ensure rewards and sanctions are applied consistently to all groups of pupils
- Ensuring that all staff understand the behavioural expectations and the importance of maintaining them
- Providing new staff with a clear induction into the academy's behavioural culture to ensure they understand its rules and routines, and how best to support all pupils to participate fully
- Offering appropriate training in behaviour management, and the impact of special educational needs and disabilities (SEND) and mental health needs on behaviour, to staff who require it, so they can fulfil their duties set out in this policy
- Ensuring this policy works alongside the safeguarding policy to offer pupils both sanctions and support when necessary
- Ensuring that the data from the behaviour log is reviewed regularly, to make sure that no groups of pupils are being disproportionately impacted by this policy

Academy Staff

All staff are responsible for:

- Creating a calm and safe environment for pupils
- Establishing and maintaining clear boundaries of acceptable pupil behaviour
- Implementing the behaviour policy consistently
- Impose relevant sanctions according to the nature of the incident
- Communicating the academy's expectations, routines, values and standards through teaching behaviour and in every interaction with pupils
- Modelling expected behaviour and positive relationships
- Providing a personalised approach to the specific behavioural needs of particular pupils
- Considering their own behaviour on the academy culture and how they can uphold academy rules and expectations
- Recording behaviour incidents promptly
- Challenging pupils to meet the academy's expectations

The senior leadership team (SLT) will support staff in responding to behaviour incidents.

Parents and Carers

Parents and carers, where possible, should:

- Get to know the behaviour policy and reinforce it at home where appropriate
- Support their child in adhering to the academy's behaviour policy
- Inform the academy of any changes in circumstances that may affect their child's behaviour
- Discuss any behavioural concerns with the teacher promptly
- Take part in any pastoral work following misbehaviour (for example: attending meetings regarding specific behaviour interventions)
- Raise any concerns about the management of behaviour with the academy directly, whilst continuing to work in partnership with the academy
- Take part in the life of the academy and its culture

The academy will endeavour to build a positive relationship with parents and carers by keeping them informed about developments in their child's behaviour and the academy's policy, and working in collaboration with them to tackle behavioural issues.

Pupils

Pupils will be made aware of the following during their induction into the behaviour culture:

- The expected standard of behaviour they should be displaying at academy
- That they have a duty to follow the behaviour policy
- The academy's key rules and routines
- The rewards they can earn for meeting the behaviour standard, and the consequences they will face if they don't meet the standard
- The pastoral support that is available to them to help them meet the behavioural standards

Pupils will be supported to meet the behaviour standards and will be provided with explicit teaching on attitudes and dispositions for learning and will be supported to develop an understanding of the academy's behaviour policy and wider culture.

At timely points, pupils will be asked to give feedback on their experience of the behaviour culture to support the evaluation, improvement and implementation of the behaviour policy.

Behaviour curriculum

At Witham St Hughs academy, strong behaviour systems are pivotal to achieving what we expect to see in our classrooms. Our aim is for all lessons to be free from disruption. For behaviour in lessons, we expect:

- Teachers to know their pupils and their learning needs well
- Pupils to be happy and secure, and able to experience a sense of achievement every day
- The curriculum to be ambitious
- Teachers plan and deliver well planned lessons
- All staff to explicitly teach attitudes to learning
- Use of positive framing
- Recognition of achievement in all senses and reward
- A culture of high expectation
- That everyone is included, and all needs are met
- That the environment is well organised, inviting and stimulating
- Behaviour standards to be high, with any inappropriate behaviour being dealt with effectively
- Routines are simple and consistently used

It is, however, not just about behaviour in our classrooms. We expect positive behaviour at all points of the school day. For behaviour outside of lessons, we expect all learners to:

- Be proud to be part of their community and treat everyone with respect
- Be courteous and respectful
- Engage positively with everyone within the academy community
- Walk calmly but purposefully around the school following the movement structures that have implemented, respecting other people's physical space
- Talk politely using developed language and not shout out
- Actively engage with staff and visitors- good morning and good afternoon is the standard response that should be expected

Where appropriate and reasonable, adjustments may be made to routines to ensure all pupils can meet behavioural expectations in the curriculum.

<u>We expect all pupils to show</u>	<u>Behaviour which is acceptable</u>	<u>Behaviour which is unacceptable</u>
<i>Respect for other people</i>	Showing respect for each other By smiling, speaking politely, showing concern for how people are feeling and offering friendship, we are showing respect for other people.	Not showing respect for each other Anyone who hits, bites, punches, slaps, spits, trips, kicks or pushes or in anyway physically mistreats anybody else is behaving in an unacceptable way.
	Showing respect for adults We show respect to adults by speaking politely, putting hands up in lessons if we wish to speak and by taking part in lessons calmly.	Not showing respect for adults Anyone who shows disrespect for adults working in the school through rudeness, swearing and defiance is behaving in an unacceptable way.
		Bullying and teasing Anyone who makes someone feel frightened and anxious by name-calling or saying and doing threatening things

		is behaving in an unacceptable way, including online.
Respect for other people's property	Showing respect for property By using equipment carefully, only using what we need and returning equipment correctly, we are showing respect for property.	Not showing respect for other people's property Anyone who steals, misuses or deliberately damages someone else's or the Academy's property is behaving in an unacceptable way.
Respect for other people's right to learn	Showing respect for people's right to learn Showing respect for other people's right to learn involves: <ul style="list-style-type: none"> • putting hands up to offer answers • acting calmly in class • ignoring unacceptable behaviour from other pupils • concentrating on your own work • moving calmly around the classroom when necessary 	Not showing respect for other people's right to learn Anyone who stops or interferes with other people's learning is behaving in an unacceptable way. In the classroom it is unacceptable to: <ul style="list-style-type: none"> • constantly shout out for the teacher's attention • make unnecessary noises which cause a disturbance • interfere with other peoples work • throw things

Mobile Phones

Some upper Key Stage Two pupils (Years 5 and 6) may need to bring mobile phones on to site as they begin to walk home without their parents.

- These pupils are allowed to bring mobile phones into school and must place on their teachers desk or in their cupboard as soon as they enter their classroom
- To mitigate the risks of distraction, disruption, bullying and abuse, mobile phones will remain under teacher supervision until the end of the school day.
- Pupils must turn their phones off or on silent (not vibrate) as soon as they arrive at school
- Pupils will not use their phones during the academy day and **will only use them when off the school site**
- There will be exceptions to the rules for medical or personal reasons following a discussion with parents
- Parental permission will need to be provided and an agreement side by both pupils and parents
- Teachers will not be held accountable in the case of any loss or damage either on the way to or from school

Responding to Behaviour

Systems to manage Behaviour

Behaviour incidents are logged and monitored through our internal behaviour log system. SIMS (or alternative) is used to track behaviour patterns and incidents to support strategic intervention and reporting.

Classroom Management

We expect all lessons to be calm and extremely purposeful. Children will be highly engaged and have a thirst for learning. There will be true working partnership and collaboration. Our aim is for all lessons to be free from disruption.

Staff will follow principles that underpin the way we work to ensure that our pupils behave appropriately.

Giving positive messages	Create a positive classroom ethos - a 3 to 1 praise to reprimand ratio. Catch pupils doing something right and give praise – verbally, sticker, citizenship point, smile or thumbs up. Remember some pupils react better to private praise. Good teachers with few pupil behaviour management problems transmit positive messages and ensure that if a consequence for an action is needed it is linked to the event. Time is paid back and is matched as appropriate – 2 minutes off break time not the whole session.
Having clear expectations	Pupils need to be clear that a rule has been broken. Behaviour problems will occur in the classroom if the children are not clear about the teacher's expectations. Children expect teachers to set boundaries, make expectations clear and do something if they are not met.
Letting pupils know about consequences	The consequences of breaking rules must be known in advance by pupils otherwise they are likely to keep testing to find out what the rules and consequences are. Pupils need to be clear that they are making a choice to behave in an unacceptable way knowing the consequences.
Being consistent	Being consistent across the school and across pupils is essential. Without consistency across the school pupils test each teacher to find out the limits. Teachers perceived by pupils as weaker are placed under more pressure as they get tested more often. Consistency can be difficult to achieve when teachers differ in their levels of tolerance to certain behaviours. Consistency across pupils is important so that staff are not caught in the situation in which pupils and their parents can liken their offence to that of somebody else and then comment on the different responses.
Anticipating and pre-empting	If unacceptable behaviour can be anticipated and pre-empted it can usually be prevented - strategies include: Scanning the classroom; moving around the classroom; changing activities and pace; moving pupils; letting the child know that their behaviour is starting to become unacceptable etc.
Giving appropriate rewards	Stickers and citizenship points are used by members of staff to reward positive behaviours. This can be for consistently high standards of work, extra effort, displaying good manners, helping a peer and so on.

Giving appropriate reprimands	<p>It is better to give private reprimands than public ones. Pupils with low self-esteem will go to their peer group for validation if they are reprimanded in public.</p> <p>Rules for effective reprimands: criticise the behaviour not the child. consider when it might be more effective to use private rather than public reprimands; avoid hostile remarks, avoid unfair comparisons, avoid reprimanding the whole class, and be clear about expectations.</p>
Dealing effectively with confrontation	<p>Make maximum use of non-verbal strategies to deal with unacceptable behaviour as with some pupils verbal strategies can quickly lead to confrontation.</p> <p>Pupil's behaviour consequently becomes subversive and less personal responsibility is taken.</p> <p>When behaviour becomes challenging try to keep focused on what you are trying to achieve i.e., good behaviour and good work in the short term and in the long term to equip pupils to self-manage their own behaviour.</p> <p>Children don't have the skills to get themselves out of confrontations - we do, so we should use them. This can be done by: creating a mutual face-saver; leaving the situation but following it up later on, restorative conversations using supportive and calm language.</p>

Responding to good behaviour

When a pupil's behaviour meets or goes above and beyond the expected behaviour standard, staff will recognise it with positive recognition and reward. This provides an opportunity for all staff to reinforce the academy's culture and ethos.

Positive reinforcements and rewards will be applied clearly and fairly to reinforce the routines, expectations and norms of the academy's behaviour culture.

Recognition of positive behaviours and the creation of a positive school ethos are essential to the self-esteem of our pupils. Most of our pupils achieve high standards of conduct most of the time. Children are rewarded with stickers and citizenship points.

In our achievement assembly each Friday, we focus on children who actively demonstrate the academy's Code of Conduct in action, or who demonstrate noteworthy academic achievement. The area of celebration alters each week. These children receive a certificate in acknowledgement of their success.

In KS1 children are rewarded with stickers when they demonstrate behaviour inline with an Academy value. In KS2, citizenship points are earned to represent the Academy values; ambition, respect, unity, resilience and enjoyment. Once 10 stamps are earned in each area a bronze, silver and then gold badge are awarded during Friday celebration assembly. An 'Outstanding Citizen' badge is available for pupils who reach beyond gold before the end of the year.

Responding to Misbehaviour

When a pupil's behaviour falls below the standard that can reasonably be expected of them, staff will respond in order to restore a calm and safe learning environment, and to prevent recurrence of misbehaviour.

Staff will endeavour to create a predictable environment by always challenging behaviour that falls short of the standards, and by responding in a consistent, fair and proportionate manner, so pupils know with certainty that misbehaviour will always be addressed.

De-escalation techniques will be used to help prevent further behaviour issues arising, such as the use of pre-arranged scripts and phrases.

All pupils will be treated equitably under the policy, with any factors that contributed to the behavioural incident identified and taken into account.

When giving behaviour sanctions, staff will also consider what support could be offered to a pupil to help them to meet behaviour standards in the future.

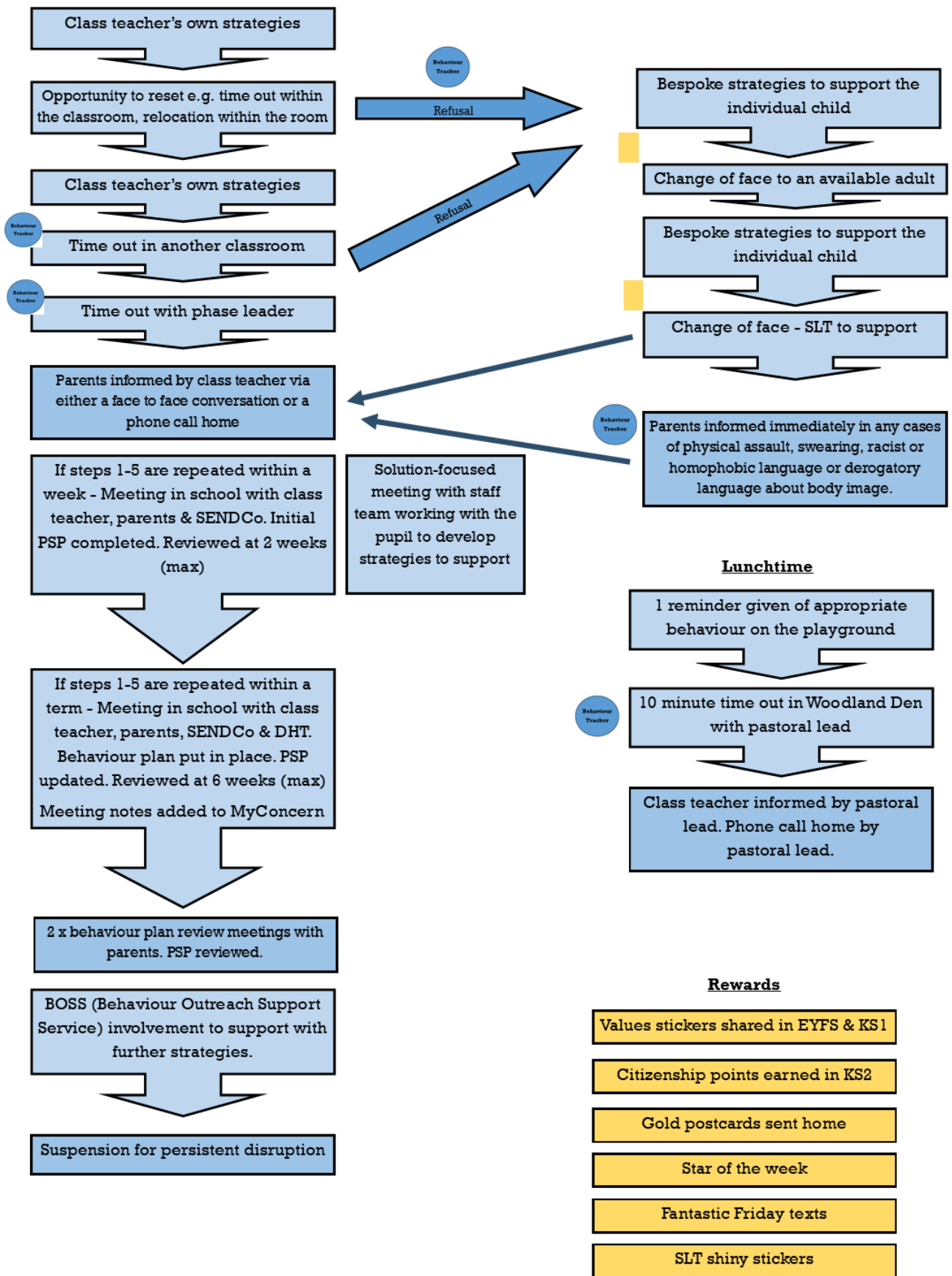
The academy may use 1 or more of the following sanctions in response to unacceptable behaviour:

- A verbal reprimand and reminder of the expectations of behaviour
- Expecting work to be completed at break or lunchtime
- Loss of privileges - roles of responsibility given in school, attendance at after school clubs
- Referring the pupil to a senior member of staff
- Removal of the pupil from the classroom to a designated and supervised area
- Phone call home to parents and/or meeting in school
- Agreeing a behaviour plan
- Completing a risk assessment
- Suspension
- Permanent exclusion, in the most serious of circumstances

Personal circumstances of the pupil will be taken into account when choosing sanctions and decisions will be made on a case-by-case basis, but with regard to the impact on perceived fairness.

All staff will follow the step approach below when dealing with incidents of behaviour:

Behaviour Flow Chart



Responding to Bullying

Procedures

- Pupils should report bullying incidents to a member of staff or someone who they can trust.
- Parents reporting any bullying incidents must use the attached form – also available in the school office.
- In cases of bullying, the incidents will be recorded by staff on the MIS (or alternative) and addressed initially by the class teacher, then the Deputy Headteacher and if an incident is not then resolved ultimately the Headteacher.
- In cases of bullying, parents of the pupils accused of bullying will be informed and will as necessary be asked to come in to a meeting to discuss the problem.
- Appropriate feedback will be given to parents reporting bullying in a timely manner.
- The academy accepts that any child could display bullying behaviour, and our approach is to help those doing so to change their behaviour.
- If necessary and appropriate, external agencies will be consulted to provide support.

Outcomes

- The child displaying bullying behavior will be asked to genuinely apologise. Other consequences such as (a) an apology letter or (b) a restorative conversation with the pupil affected or (c) educating the child around bullying and its affects, may be required
- The academy will aim to sort out differences and encourage the pupils to reconcile.
- In serious cases, suspension or even exclusion will be considered.
- After the incident / incidents have been investigated and dealt with, each case will be monitored to ensure repeated bullying does not take place but the incident/incidents themselves will be considered closed. The academy strongly believes that all children can be bullied or bully and as such, once an issue has been addressed, all parties should be allowed to move on from the issue at hand.

Prevention

We will use various methods for helping children to prevent bullying. This will include:

- Having a listening and caring ethos
- Encouraging discussion and avoiding premature assumptions
- Adopting a problem solving approach
- Exploring issues through the curriculum by PSHCE, assemblies and Anti-bullying week.
- Supporting the bully and the victim in modifying behaviour
- Providing information through display boards and posters
- Where cyberbullying is concerned, educating and engaging parents on the principles of online safety so they know the dangers of what unsupervised internet access can create.
- Encouraging parents to check what their children are doing online and using parental controls on their computer so that they are comfortable that children are not wandering into dangerous territory.

The anti-bullying policy works alongside the behaviour policy. This is discussed with pupils so they are informed of the procedures

Reasonable Force

Reasonable force covers a range of interventions that involve physical contact with pupils. All members of staff have a duty to use reasonable force, in the following circumstances, to prevent a pupil from:

- Causing disorder

- Hurting themselves or others – peers and staff
- Damaging property
- Committing an offence

Incidents of reasonable force must:

- Always be used as a last resort
- Supported by a minimum of 2 members of staff
- Be applied using the minimum amount of force and for the minimum amount of time possible
- Be used in a way that maintains the safety and dignity of all concerned
- Never be used as a form of punishment
- Be recorded (template in appendix 2)
- Reported to parents

When considering using reasonable force, staff should, in considering the risks, carefully recognise any specific vulnerabilities of the pupil, including SEND, mental health needs or medical conditions.

Searching, Screening and Confiscation

Any prohibited items (listed in section 3) found in a pupil's possession will be confiscated. These items will not be returned to the pupil.

We will also confiscate any item that is harmful or detrimental to school discipline. These items will be returned to pupils after discussion with senior leaders and parents, if appropriate.

Searching and screening pupils is conducted in line with the DfE's [latest guidance on searching, screening and confiscation](#).

Off-site Misbehaviour

Sanctions may be applied where a pupil has misbehaved off-site when representing the academy. This means misbehaviour when the pupil is:

- Taking part in any academy-organised or academy-related activity (e.g. trips)
- Travelling to or from the academy
- Wearing academy uniform
- In any other way identifiable as a pupil of our academy

Sanctions may also be applied where a pupil has misbehaved off-site, at any time, whether or not the conditions above apply, if the misbehaviour:

- Could have repercussions for the orderly running of the academy
- Poses a threat to another pupil
- Could adversely affect the reputation of the academy

Online Misbehaviour

The academy can issue behaviour sanctions to pupils for online misbehaviour when:

- It poses a threat or causes harm to another pupil
- It could have repercussions for the orderly running of the academy
- It adversely affects the reputation of the academy
- The pupil is identifiable as a member of the academy

Suspected Criminal Behaviour

If a pupil is suspected of criminal behaviour, the academy will make an initial assessment of whether to report the incident to the police.

When establishing the facts, the academy will endeavour to preserve any relevant evidence to hand over to the police.

If a decision is made to report the matter to the police, the Headteacher or member of the senior leadership team (SLT) will make the report.

The academy will not interfere with any police action taken. However, the academy may continue to follow its own investigation procedure and enforce sanctions, as long as it does not conflict with police action.

If a report to the police is made, the designated safeguarding lead (DSL) will make a tandem report to children's social care, if appropriate.

Zero-tolerance Approach to Sexual Harassment and Sexual Violence

The academy will ensure that all incidents of sexual harassment and/or violence are met with a suitable response, and never ignored.

Pupils are encouraged to report anything that makes them uncomfortable, no matter how 'small' they feel it might be.

The academy's response will be:

- Proportionate
- Considered
- Supportive
- Decided on a case-by-case basis

The academy has procedures in place to respond to any allegations or concerns regarding a child's safety or wellbeing. These include clear processes for:

- Responding to a report
- Carrying out risk assessments, where appropriate, to help determine whether to:
 - Manage the incident internally
 - Refer to early help
 - Refer to children's social care
 - Report to the police

Please refer to our child protection and safeguarding policy for more information.

Malicious Allegations

Where a pupil makes an allegation against a member of staff and that allegation is shown to have been deliberately invented or malicious, the academy will consider whether to discipline the pupil in accordance with this policy.

Where a pupil makes an allegation of sexual violence or sexual harassment against another pupil and that allegation is shown to have been deliberately invented or malicious, the academy will consider whether to discipline the pupil in accordance with this policy.

In all cases where an allegation is determined to be unsubstantiated, unfounded, false or malicious, the academy (in collaboration with the local authority designated officer (LADO), where relevant) will consider whether the pupil who made the allegation is in need of help, or the allegation may have been a cry for help. If so, a referral to children's social care may be appropriate.

The academy will also consider the pastoral needs of staff and pupils accused of misconduct.

Please refer to our child protection and safeguarding policy for more information on responding to allegations of abuse against staff or other pupils.

Serious Sanctions

Removal from Classrooms

In response to serious or persistent breaches of this policy, the academy may remove the pupil from the classroom for a limited time.

Pupils who have been removed will continue to receive education under the supervision of a member of staff that is meaningful, but it may differ from the mainstream curriculum. Arrangements for removal from classrooms at Witham St Hughs academy are as follows:

- Provide a calm and purposeful environment with minimal distractions
- Individual targets set for the pupil
- Bespoke timetables and clear visual NOW and NEXT boards
- Adequate brain breaks and a range of low demand activities
- Rewards for good behaviour tailored to the individual child, their needs and interests
- Clear and consistent sanctions
- External agency support and advice when required – including BOSS and PRT.

Removal is a serious sanction and will only be used in response to serious misbehaviour. Staff will only remove pupils from the classroom once other behavioural strategies have been attempted, unless the behaviour is so extreme as to warrant immediate removal.

Removal can be used to:

- Restore order if the pupil is being unreasonably disruptive
- Maintain the safety of all pupils and staff
- Allow the disruptive pupil to continue their learning in a managed environment
- Allow the disruptive pupil to regain calm in a safe space

Pupils will not be removed from classrooms for prolonged periods of time without the explicit agreement of the Headteacher.

Pupils should be reintegrated into the classroom as soon as appropriate and safe to do so. The academy will consider what support is needed to help a pupil successfully reintegrate into the classroom and meet the expected standards of behaviour.

Parents will be informed on the same day that their child is removed from the classroom.

The academy will consider an alternative approach to behaviour management for pupils who are frequently removed from class, such as:

- Support sessions and supervised break times with SENDCo and Pastoral Leader
- Use of additional teaching assistants to support the child
- Short term daily feedback to parents/carers
- Long term risk assessments and behaviour plans and/or pastoral support plans
- Involvement of parents at regular review meetings alongside the Pupil Reintegration Team
- Multi-agency assessment and support

Staff will record all incidents of removal from the classroom along with details of the incident that led to the removal, and any protected characteristics of the pupil in the behaviour log and in more detail on My Concern.

Suspension and Permanent Exclusions

The academy can use suspension and permanent exclusion in response to serious incidents or in response to persistent poor behaviour, which has not improved following in-school sanctions and interventions.

The decision to suspend or exclude will be made by the Headteacher and only as a last resort.

Please refer to our suspensions and exclusions policy for more information.

Responding to Misbehaviour from Pupils with SEND

Recognising the Impact of SEND on Behaviour

The academy recognises that pupils' behaviour may be impacted by a special educational need or disability (SEND).

When incidents of misbehaviour arise, we will consider them in relation to a pupil's identified need although we recognise that not every incident of misbehaviour will be connected to their need or disability. Decisions on whether a pupil's need or disability had an impact on an incident of misbehaviour will be made on a case-by-case basis.

When dealing with misbehaviour from pupils with an identified need or disability, especially where this affects their behaviour, the academy will balance their legal duties when making decisions about enforcing the behaviour policy. The legal duties include:

- Taking reasonable steps to avoid causing any substantial disadvantage to a disabled pupil caused by the academy's policies or practices ([Equality Act 2010](#))
- Using our best endeavours to meet the needs of pupils with SEND ([Children and Families Act 2014](#))
- If a pupil has an education, health and care (EHC) plan, the provisions set out in that plan must be secured and the academy must co-operate with the local authority and other bodies

As part of meeting these duties, the academy will anticipate, as far as possible, likely triggers of misbehaviour, and put in place support to prevent these from occurring.

Any preventative measures will take into account the specific circumstances and requirements of the pupil concerned.

At Witham St Hughs academy our approach to anticipating and removing triggers of misbehaviour may include:

- Short, planned movement breaks for pupils with SEND who find it difficult to sit still for long
- Adjusting seating plans to allow a pupil with visual or hearing impairment to sit in sight of the teacher
- Adjusting uniform requirements for a pupil with sensory issues
- Training for staff in understanding a range of additional needs, including Autism
- Use of nurture spaces where pupils can regulate their emotions during a moment of sensory overload

Adapting Sanctions for Pupils with SEND

When considering a behavioural sanction for a pupil with SEND, the academy will take into account:

- Whether the pupil was unable to understand the rule or instruction?
- Whether the pupil was unable to act differently at the time as a result of their SEND?
- Whether the pupil is likely to behave aggressively due to their SEND?

If the answer to any of these questions is yes, the academy will assess if it is appropriate to use a sanction and if so, whether any reasonable adjustments need to be made to the sanction.

Considering Whether a Pupil Displaying Challenging Behaviour may have Unidentified SEND

The academy's special educational needs co-ordinator (SENCO) may evaluate a pupil who exhibits challenging behaviour to determine whether they have any underlying needs that are not currently being met.

Where necessary, support and advice will also be sought from specialist teachers, an educational psychologist, medical practitioners and/or others, to identify or support specific needs.

When acute needs are identified in a pupil, we will liaise with external agencies and plan support programmes for that child. We will work with parents to create the plan and review it on a regular basis.

Pupils with an Education, Health and Care (EHC) Plan

The provisions set out in the EHC plan must be secured and the academy will co-operate with the local authority and other bodies.

If the academy has a concern about the behaviour of a pupil with an EHC plan, it will make contact with the local authority to discuss the issue. Lincolnshire County Council SEND contact number is 01522 553332. If appropriate, the academy may request an emergency annual review of the EHC plan.

Supporting pupils following a sanction

Following a sanction, the academy will consider strategies to help pupils to understand how to improve their behaviour and meet the expectations of the academy.

Strategies for reintegrating pupils following removal from the classroom, time spent in another area of school, in an another setting (alternative provision) or following suspension.

This could include measures like:

- Reintegration meeting with parents, staff and PRT
- A phased return back into the classroom – a bespoke timetable gradually increasing time back into class.
- Daily contact with the pastoral leader and/or SENDCo
- A table card with personalised behaviour expectations and targets

Safeguarding

The academy recognises that changes in behaviour may be an indicator that a pupil is in need of help or protection.

We will consider whether a pupil's misbehaviour may be linked to them suffering, or being likely to suffer, significant harm.

Where this may be the case, we will follow our child protection and safeguarding policy, and consider whether pastoral support, an early help intervention or a referral to children's social care is appropriate.

Please refer to our child protection and safeguarding policy for more information.

Pupil Transition

Inducting Incoming Pupils

The academy will support incoming pupils to meet behaviour standards by offering an induction process to familiarise them with the behaviour policy and the wider academy culture.

Preparing Outgoing Pupils for Transition

To ensure a smooth transition to the next year, pupils will have transition sessions with their new teacher(s). In addition, staff members hold transition meetings to ensure that all information and strategies used to support a pupil are passed on.

To ensure behaviour is continually monitored and the right support is in place, information related to pupil behaviour issues may be transferred to relevant staff at the start of the term or year.

Training

As part of their induction process, our staff are provided with regular training on managing behaviour, including training on:

- The expectations of the academy, school ethos and the code of conduct
- The Team Teach approach to positive handling and restraint
- The individual needs of the pupils at the academy
- How SEND and mental health needs impact behaviour

Behaviour management will also form part of continuing professional development. External agencies, such as BOSS, will often provide bespoke training and support as required.

Partnership Working

Witham St Hughs Academy and The Village Kids Club work in partnership to ensure the highest standards of care and support for children. As such, any concerns relating to behaviour identified by Witham St Hughs Academy or The Village Kids Club will be communicated between both parties. This information will be transferred between the designated named employees from Witham St Hughs Academy and The Village Kids Club respectively. Any such information will be treated sensitively and in confidence.

Monitoring Arrangements

Monitoring and Evaluating Academy Behaviour

The academy will collect data on the following:

- Behavioural incidents, including removal from the classroom
- Attendance, permanent exclusion and suspension
- Use of off-site alternative provisions and managed moves
- Incidents of searching, screening and confiscation
- Anonymous surveys for staff, pupils, governors and other stakeholders on their perceptions and experiences of the academy behaviour culture

The data will be analysed every term by SLT

The data will be analysed from a variety of perspectives including:

- At academy level
- By age group

- At the level of individual members of staff
- By time of day/week/term
- By protected characteristic
- By distinct pupil group characteristics, e.g. prior attainment, phase of schooling, disadvantage

The academy will use the results of this analysis to make sure it is meeting its duties under the Public Sector Equality Duty.

Monitoring this Policy

This behaviour policy will be reviewed by the Headteacher and AGB at least annually, or more frequently, if needed, to address findings from the regular monitoring of the behaviour data (as per section 13.1). At each review, the policy will be approved by the AGB.

Links with Other Policies

This behaviour policy is linked to the following policies

- Exclusion and suspensions policy
- Child protection and safeguarding policy
- Physical restraint policy
- SEND policy
- Equality Policy

Bullying incident form



Section 1: Staff details

Date completing form:

Name of staff:

Email address of staff:

After completion this form needs to be handed to: [Insert staff responsible for anti-bullying.]

Section 2: Details of incident

If you are unsure of the category (for example whether it is homophobic or biphobic bullying) then you can tick all that you think may apply and simply explain the details.

Nature of incident: Tick all that apply

- Physical** (e.g. hitting, kicking, pushing or inappropriate/unwanted physical contact)
- Verbal** (e.g. name calling, ridicule, comments)
- Cyber** (e.g. messaging, social media, email)
- Emotional/indirect/segregation** (e.g. excluding someone, spreading rumours)
- Visual/written** (e.g. graffiti, gestures, wearing racist insignia)
- Damage to personal property**
- Threat** with a weapon
- Theft or extortion**
- Persistent Bullying**

Form of bullying or incident: Tick all that apply

- Race** – racist bullying
- Sexual orientation – **homophobic**
- Sexual orientation – **biphobic**
- Special educational needs (**SEN**) or **Disability**
- Culture** or **class**
- Gender identity** – transphobic
- Sex** – sexist bullying
- Appearance** or **health conditions**
- Religion** or **Belief** related
- Related to home or other personal circumstances
- Other** or non-specific

Details of those involved: record all involved whether adults, pupils or visitors.

	Name	Age/Year group	Class Teacher	Other relevant information (e.g. gender, SEN, disability, religion)
Target of bullying/incident				
Person/s responsible for bullying/incident				

Details of incident

Date		Place:		Time:	
Witnesses					
Repeat incident or serious incident					
Any relevant supporting information e.g. witness					
Action taken					
Details of others involved or notified					
Date for review					

Appendix 2 – Physical Restraint Log (Model)



Physical restraint form

L.E.A.D. Academy Trust

Section A

Name of child		Class Teacher	
Date		Year group	
Place		Time	

Name/s of staff
Name/s of witnesses

Reason for Intervention							
Immediate danger to personal injury to self		Immediate danger to injury to another person					
Disruption to others		Fighting		Assault		Verbal threats	Accidental
To avoid damage to property		To prevent/interrupt absconding			Off site		Within grounds

Description of Incident

De-escalation Techniques Used				
Verbal Advice/Support		Humour		Directed Time out
Reassurance		Time out offered		
Calm Talking		Distraction		
Neutral tone/body language		Step Away		Other (specify)